

LICOA

February 15, 2009



BRUNCH

11:00 am to 3:00 pm

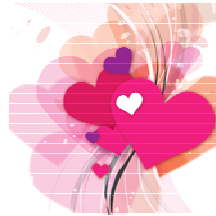
At the famous

IRISH COFFEE PUB

131 Carleton Ave. East Islip, NY

Features:

Fresh bakery items - Fruit Salad -Omelet Station
Carving Station - Hot Dishes - Assorted Desserts
Coffee, Tea, Decaf - Mimosa Toast



\$35/per person - includes tax and tip

Reserved, Private parking area, Note: limited seating- First Come, first served

Directions- Carleton Ave., East Islip

Southern State Parkway exit 43 south or Sunrise Highway exit 46 south

On left, south of the railroad trestle- parking beyond the portico, north side of building

RSVP

I will attend:

Member Name Printed _____ w/guest Name _____

Cell Phone # _____

Amount enclosed (check to LICOA) \$ _____

Mail to: LICOA Valentine Brunch. % Kevin Brown, PO Box 1013, Rockville Centre, NY 11571